



# MONTHLY MEMBERSHIP PROGRESS REPORT

Results as of: 5/31/2015

Multiple District 8

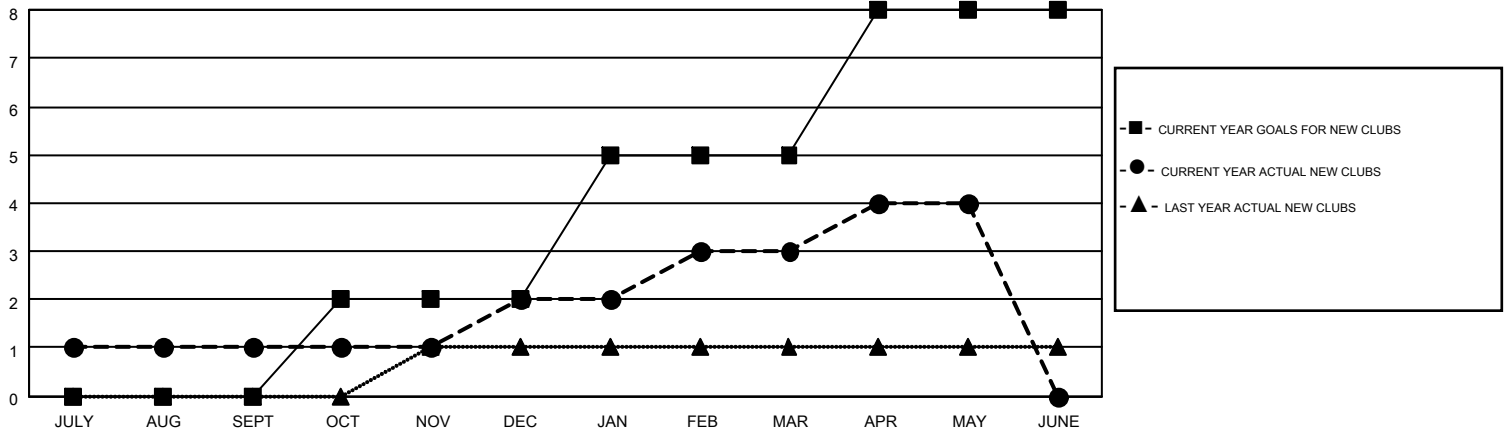
LOCATION: LOUISIANA

GMT: HAL GRIFFIN

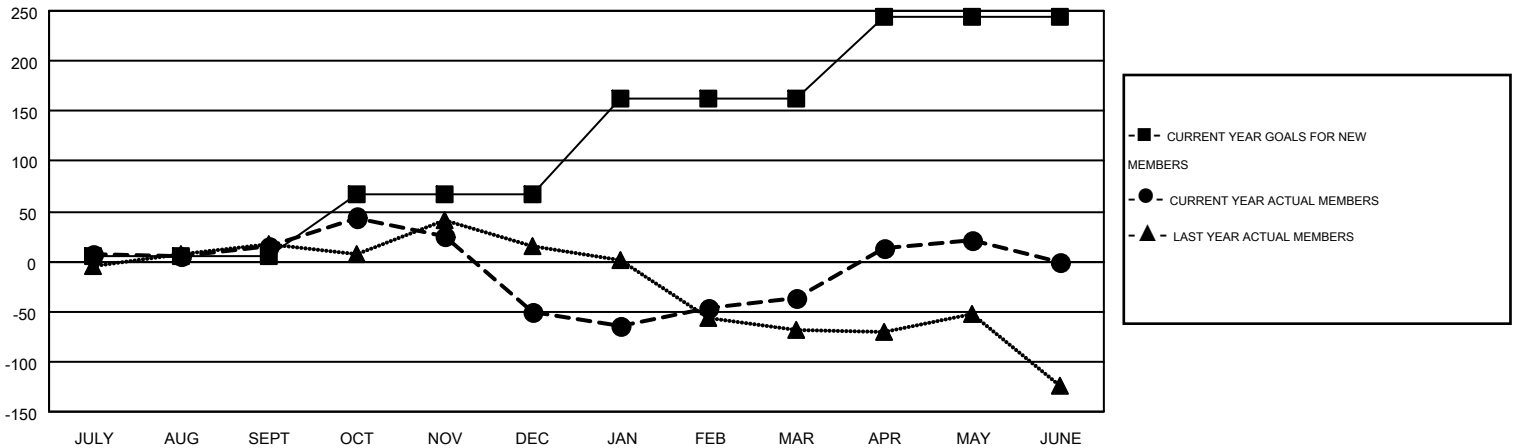
GMT CA 1

Clubs					Members				
RESULTS FOR 2014-2015					RESULTS FOR 2014-2015				
QUARTER	NEW CLUB GOAL	NEW CLUBS	DROPPED CLUBS	NET GAIN/LOSS	QUARTER	NEW MEMBER GOAL	CHARTER AND NEW MEMBERS ADDED	DROPPED MEMBERS	NET GAIN/LOSS
JULY/AUG/SEPT	0	1	1	0	JULY/AUG/SEPT	6	198	183	15
OCT/NOV/DEC	2	1	4	-3	OCT/NOV/DEC	61	135	200	-65
JAN/FEB/MAR	3	1	2	-1	JAN/FEB/MAR	96	168	155	13
APR/MAY/JUNE	3	1	0	1	APR/MAY/JUNE	81	137	79	58

GOALS AND ACTUAL NEW CLUBS CUMULATIVE



GOALS AND ACTUAL MEMBERS CUMULATIVE



DROPPED CLUBS: 7	113 CLUBS OF 167 ADDED 1 OR MORE NEW MEMBERS	<u>GENDER DISTRIBUTION</u>	
		MALE	3,251 (70.08%)
<u>DROPPED MEMBERS</u>	<a href="#">CLICK HERE FOR HEALTH ASSESSMENT DATA</a>	FEMALE	1,388 (29.92%)
DECEASED		75	FAMILY UNIT MEMBERS
CLUB CANCELLED	44	HEAD OF HOUSEHOLD	369
OTHER	498	NON-HEAD OF HOUSEHOLD	405
<b>TOTAL</b>	<b>617</b>		